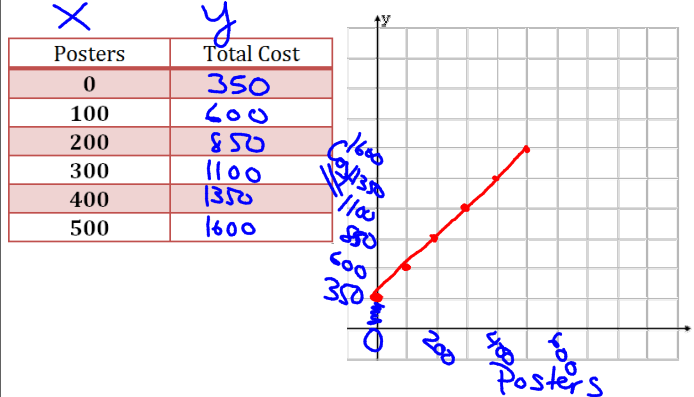


4.1 Using an Equation to Draw a Graph

The cost, C dollars, to print "n" color posters is given by the formula $C = 350 + 2.5n$
 $y = b + mx$ → slope intercept
 y-intercept

a) Create a table of values to show the cost of up to 500 posters



b) What do 350 and 2.5 represent in the equation?

350 our initial setup costs before printing.
 2.5 represents the cost per poster.

Mar 1-3:01 PM

Graph $C = 350 + 2.5n$ using your graphing calculator

$y = 350 + 2.5x$ # of posters.
 Cost
 X: [0, 500, 100]
 Y: [350, 1600, 250]

Mar 1-4:10 PM

$y = 600 - 4x$

Steps for creating a Table

1. 2nd f WINDOW
2. Table Start = 0
 $\Delta t \text{bl} \rightarrow$ The rate of increase of our x values.
3. 2nd f Graph

X: [0, 300, 50]
 Y: [-600, 600, 200]

X	Y1
0	600
50	400
100	200
150	0
200	-200
250	-400
300	-600

X=0

Sketch

Mar 1-4:10 PM

Graph $2x + 3y = 6$

$3y = 6 - 2x$ ZOOM

$y = \frac{(6 - 2x)}{3}$ 6: Standard.

Graph $7x - 6y = 40$

$-6y = 40 - 7x$

$y = \frac{(40 - 7x)}{-6}$

Mar 1-4:11 PM

Equation of Line Property

You need to determine if a point lies on a line and satisfies an equation

$$2x + 3y = 6$$

Does (9, 4) satisfy the equation?

x y

$$2(9) + 3(4) = 6$$

~~$18 + 12 = 6$~~

Does not Satisfy.

Mar 1-4:12 PM

Assignment : Pg. 202

**1 odds, 4, 5,
7 odds using calculator
and 8**

Mar 1-4:14 PM