

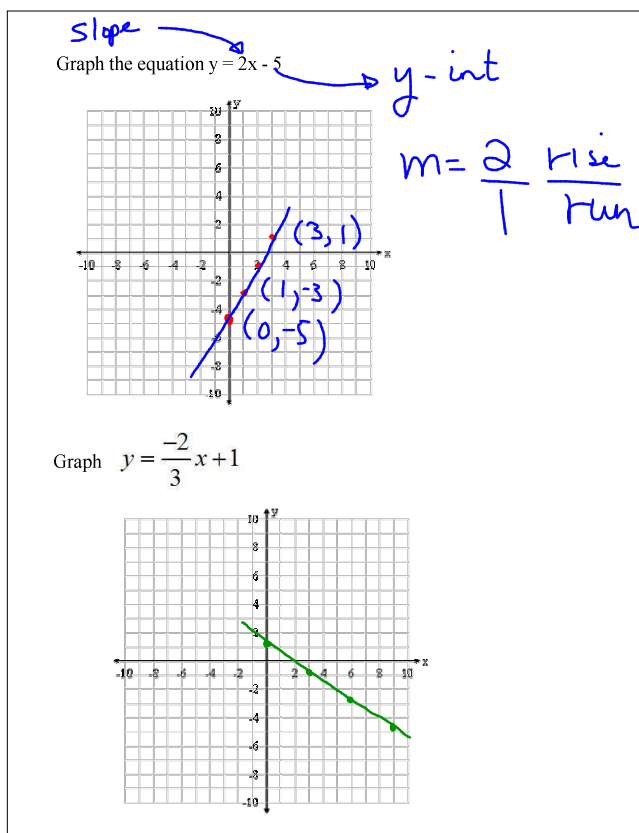
## 4.3 Equations of Lines: Part I

Complete Pg. 213 2 c

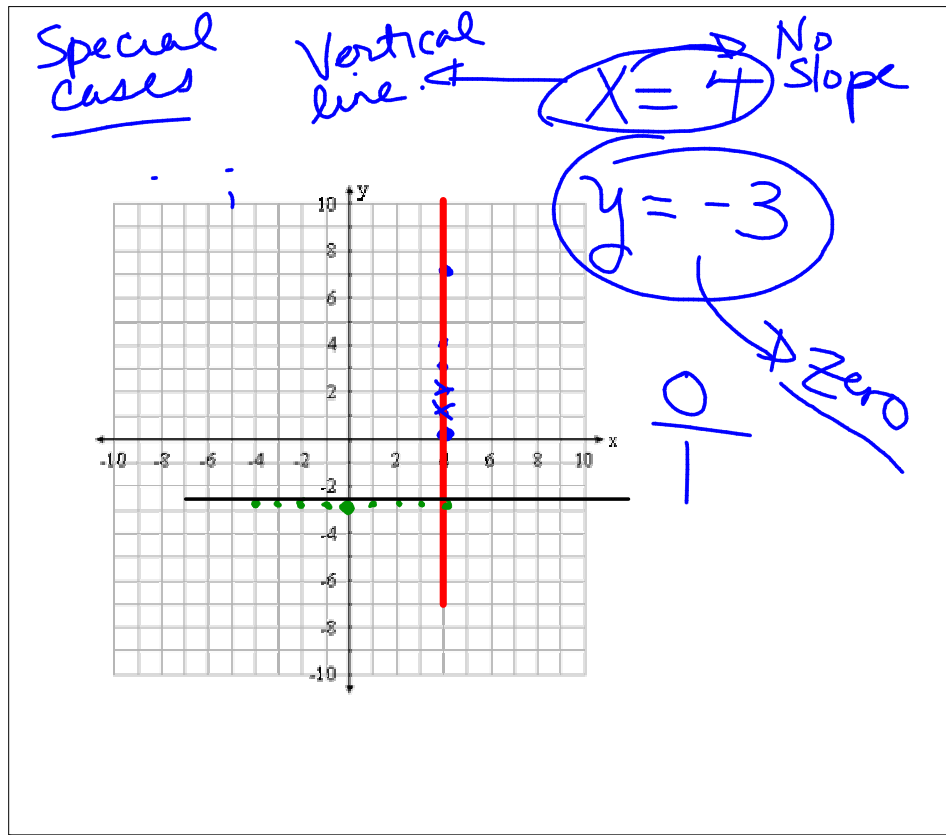
Use following applet to discuss  $m$  and  $b$

<http://www.ronblond.com/M10/lineAP/index.html>

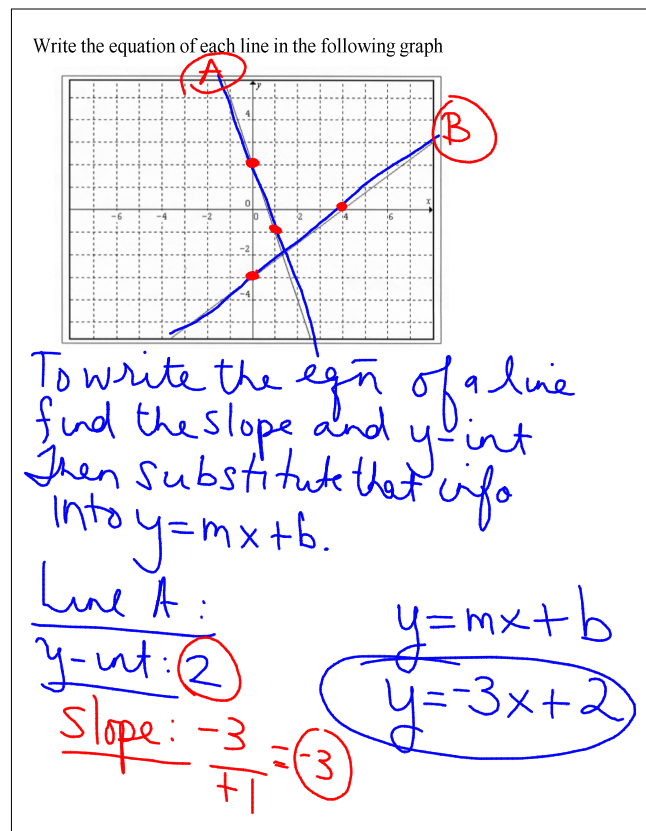
Oct 17-4:02 PM



Oct 17-4:07 PM



Oct 17-1:22 PM



Oct 17-4:14 PM

Line B  
y-int: -3  
Slope:  $\frac{3}{4}$   
 $y = \frac{3}{4}x - 3$

Oct 17-1:42 PM

Pg. 217  
2-4 odds  
5a odds (graphs)  
10, 11

Oct 17-1:46 PM